

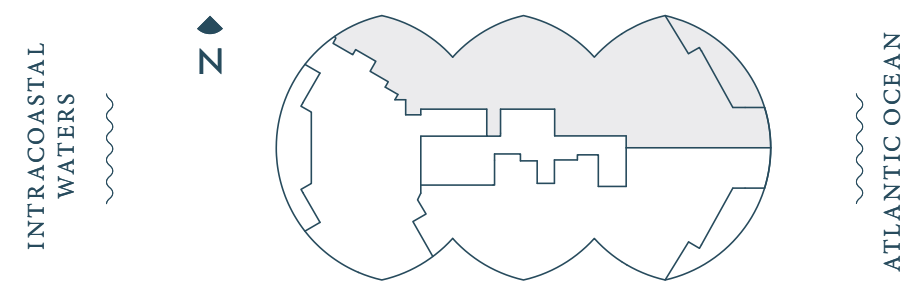
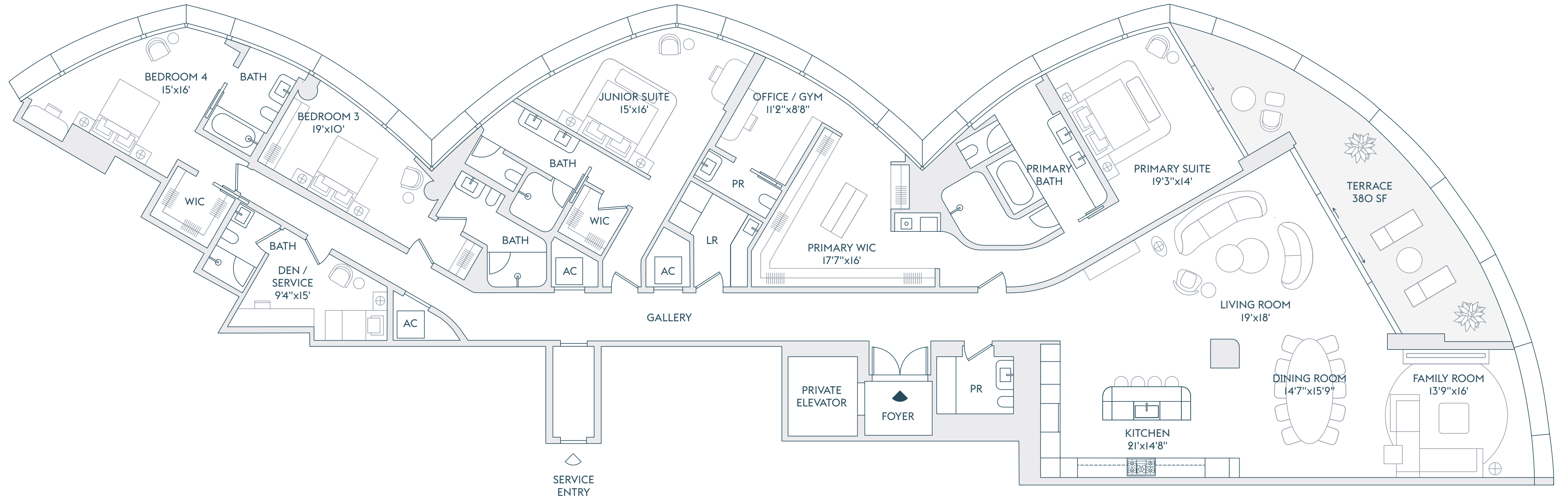
A 2

4 BEDROOMS
 5 BATHROOMS
 2 POWDER ROOMS
 DEN / SERVICE
 OFFICE / GYM

INTERIOR
 4,784 SF | 444 SQM

EXTERIOR
 380 SF | 35 SQM

TOTAL
 5,164 SF | 479 SQM



The dimensions stated for this Unit floor plan are approximate because there are various recognized methods for calculating the square footage of a Unit. The square footage stated herein is calculated from the exterior boundaries of the exterior walls to the centerline of interior demising walls without deductions for cutouts, curves, or architectural features. This method typically results in quoted dimensions greater than the dimensions that would be determined by using other accepted methods. The definition of "Unit" and the calculation method to be relied upon is the method of calculation set forth by the Developer in the Developer's prospectus, which method may result in a square footage calculation that is less than the method used herein. Dimensions and Unit configurations are not guaranteed and may change during construction. Depictions of furnishings, fixtures, and other items of personal property are not included with purchase. Uses of space depicted are not guaranteed. Consult the Developer's prospectus to learn Unit dimensions, what is offered with the Unit, and all terms and conditions. 2022 © Carlton Terrace Owner LLC, with all rights reserved.

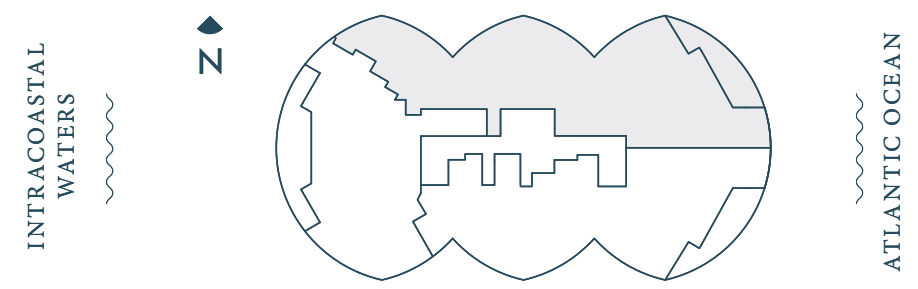
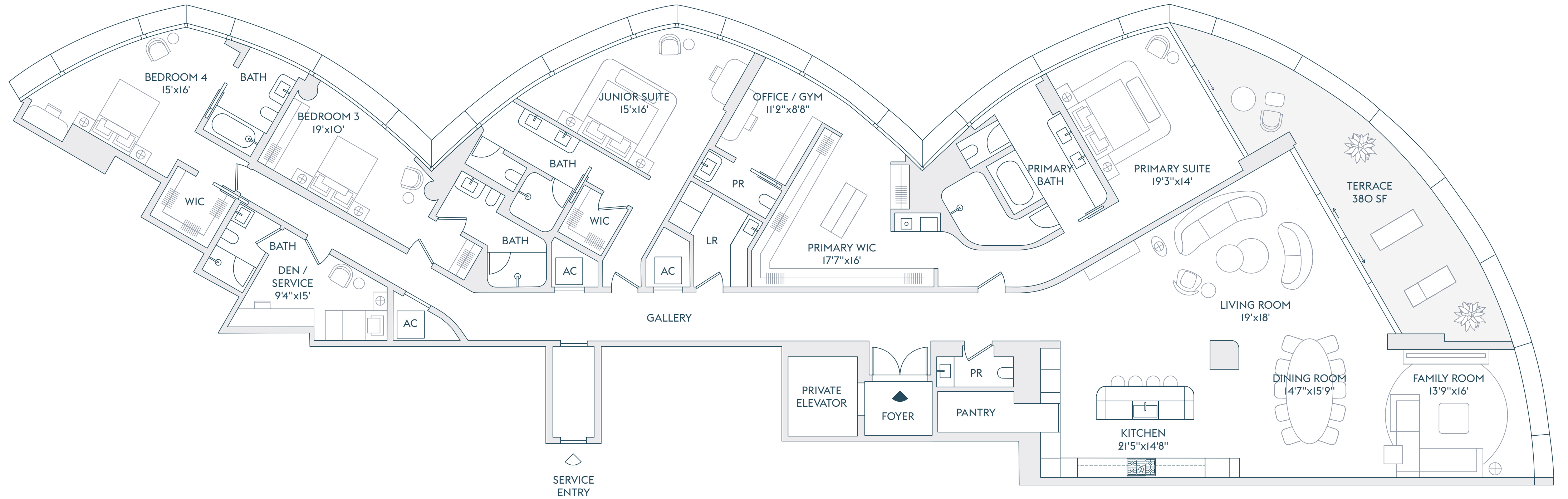
A 3-21

4 BEDROOMS
 5 BATHROOMS
 2 POWDER ROOMS
 DEN / SERVICE
 OFFICE / GYM

INTERIOR
 4,810 SF | 446.5 SQM

EXTERIOR
 380 SF | 35 SQM

TOTAL
 5,190 SF | 481.5 SQM



The dimensions stated for this Unit floor plan are approximate because there are various recognized methods for calculating the square footage of a Unit. The square footage stated herein is calculated from the exterior boundaries of the exterior walls to the centerline of interior demising walls without deductions for cutouts, curves, or architectural features. This method typically results in quoted dimensions greater than the dimensions that would be determined by using other accepted methods. The definition of "Unit" and the calculation method to be relied upon is the method of calculation set forth by the Developer in the Developer's prospectus, which method may result in a square footage calculation that is less than the method used herein. Dimensions and Unit configurations are not guaranteed and may change during construction. Depictions of furnishings, fixtures, and other items of personal property are not included with purchase. Uses of space depicted are not guaranteed. Consult the Developer's prospectus to learn Unit dimensions, what is offered with the Unit, and all terms and conditions. 2022 © Carlton Terrace Owner LLC, with all rights reserved.

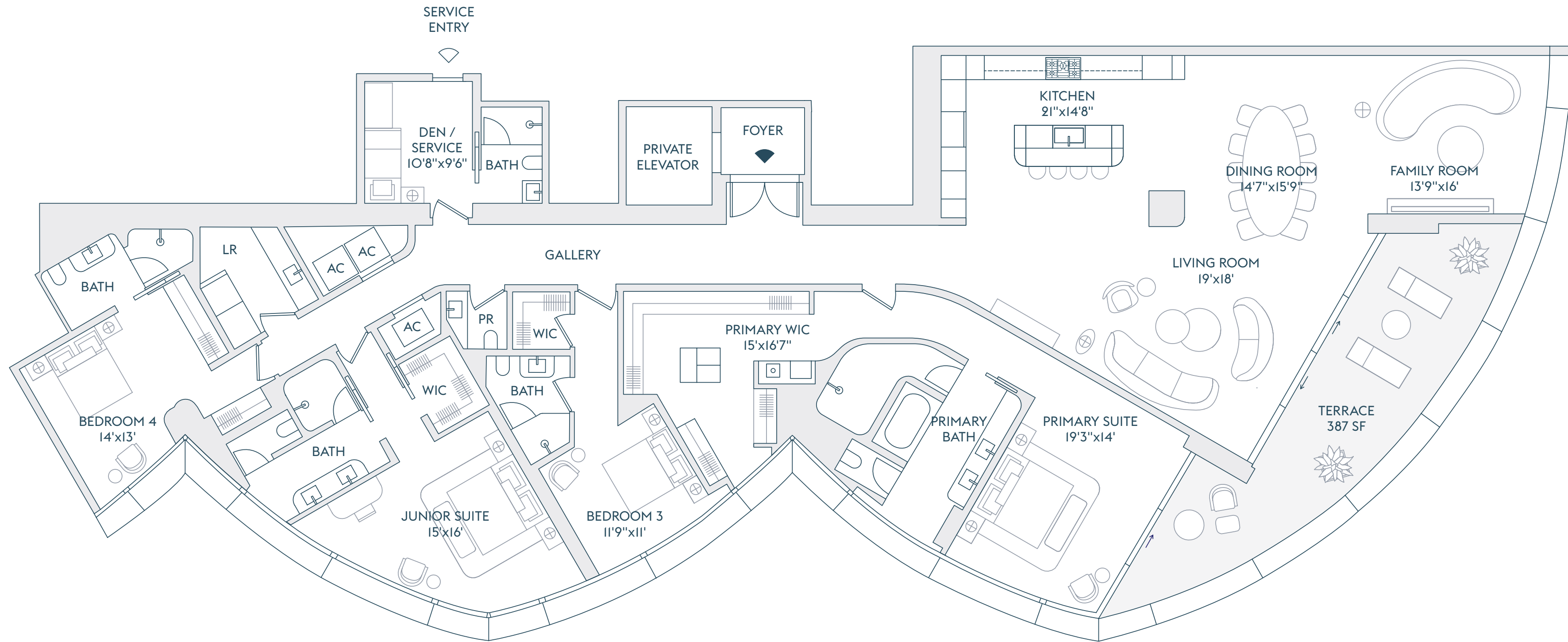
B 2

4 BEDROOMS
 5 BATHROOMS
 1 POWDER ROOM
 DEN / SERVICE

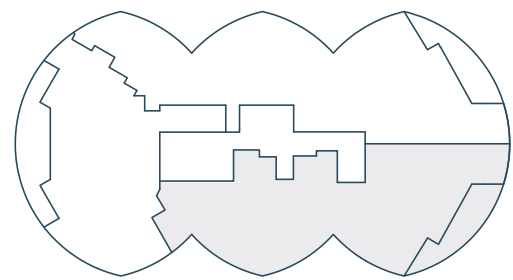
INTERIOR
 4,215 SF | 391.5 SQM

EXTERIOR
 387 SF | 36 SQM

TOTAL
 4,602 SF | 427.5 SQM



INTRACOASTAL
 WATERS



ATLANTIC OCEAN

The dimensions stated for this Unit floor plan are approximate because there are various recognized methods for calculating the square footage of a Unit. The square footage stated herein is calculated from the exterior boundaries of the exterior walls to the centerline of interior demising walls without deductions for cutouts, curves, or architectural features. This method typically results in quoted dimensions greater than the dimensions that would be determined by using other accepted methods. The definition of "Unit" and the calculation method to be relied upon is the method of calculation set forth by the Developer in the Developer's prospectus, which method may result in a square footage calculation that is less than the method used herein. Dimensions and Unit configurations are not guaranteed and may change during construction. Depictions of furnishings, fixtures, and other items of personal property are not included with purchase. Uses of space depicted are not guaranteed. Consult the Developer's prospectus to learn Unit dimensions, what is offered with the Unit, and all terms and conditions. 2022 © Carlton Terrace Owner LLC, with all rights reserved.

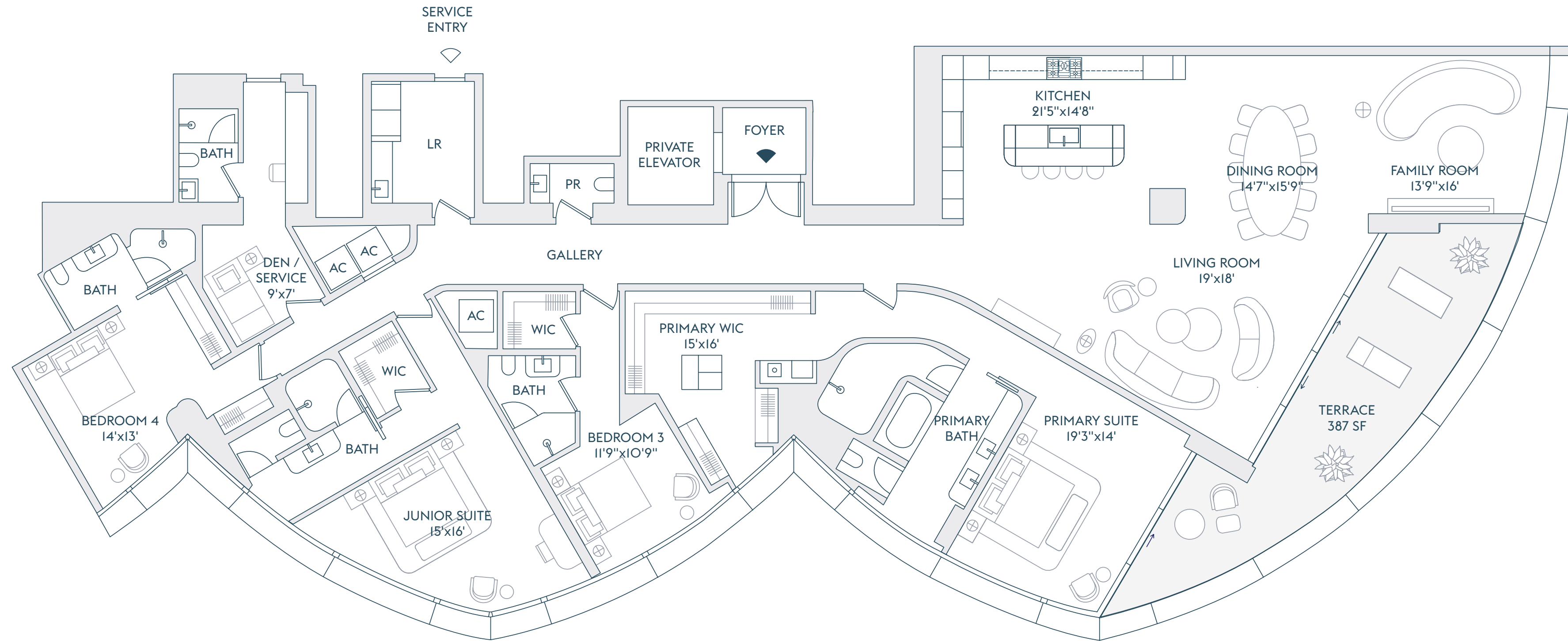
B 3-21

4 BEDROOMS
 5 BATHROOMS
 1 POWDER ROOM
 DEN / SERVICE

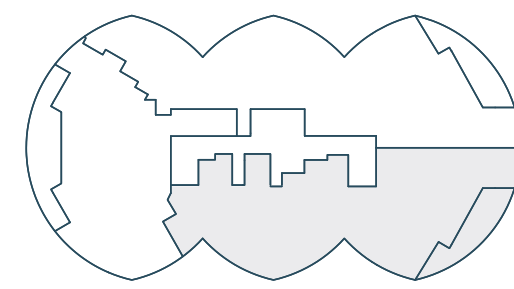
INTERIOR
 4,358 SF | 404.5 SQM

EXTERIOR
 387 SF | 36 SQM

TOTAL
 4,745 SF | 440.5 SQM



INTRACOASTAL
 WATERS



ATLANTIC OCEAN

The dimensions stated for this Unit floor plan are approximate because there are various recognized methods for calculating the square footage of a Unit. The square footage stated herein is calculated from the exterior boundaries of the exterior walls to the centerline of interior demising walls without deductions for cutouts, curves, or architectural features. This method typically results in quoted dimensions greater than the dimensions that would be determined by using other accepted methods. The definition of "Unit" and the calculation method to be relied upon is the method of calculation set forth by the Developer in the Developer's prospectus, which method may result in a square footage calculation that is less than the method used herein. Dimensions and Unit configurations are not guaranteed and may change during construction. Depictions of furnishings, fixtures, and other items of personal property are not included with purchase. Uses of space depicted are not guaranteed. Consult the Developer's prospectus to learn Unit dimensions, what is offered with the Unit, and all terms and conditions. 2022 © Carlton Terrace Owner LLC, with all rights reserved.

RESIDENCE FLOOR

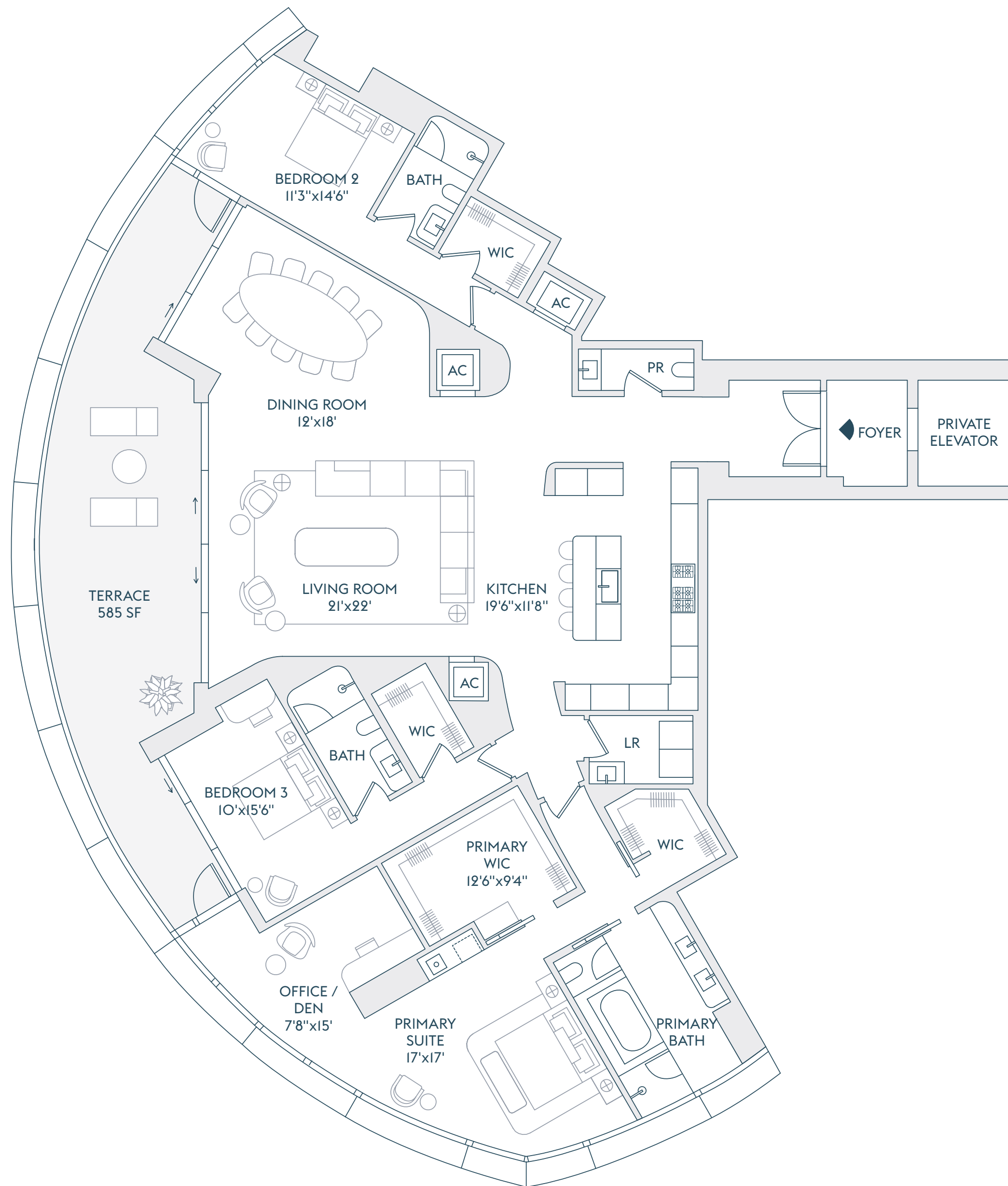
C 2

3 BEDROOMS
3 BATHROOMS
1 POWDER ROOM
OFFICE / DEN

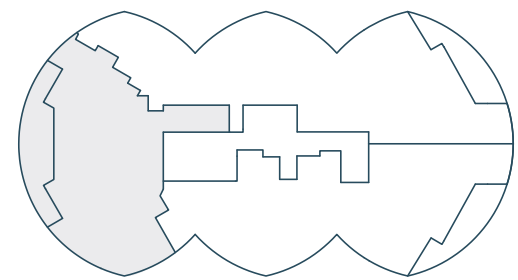
INTERIOR
3,284 SF | 305 SQM

EXTERIOR
585 SF | 54 SQM

TOTAL
3,869 SF | 359 SQM



INTRACOASTAL
WATERS



ATLANTIC OCEAN

The dimensions stated for this Unit floor plan are approximate because there are various recognized methods for calculating the square footage of a Unit. The square footage stated herein is calculated from the exterior boundaries of the exterior walls to the centerline of interior demising walls without deductions for cutouts, curves, or architectural features. This method typically results in quoted dimensions greater than the dimensions that would be determined by using other accepted methods. The definition of "Unit" and the calculation method to be relied upon is the method of calculation set forth by the Developer in the Developer's prospectus, which method may result in a square footage calculation that is less than the method used herein. Dimensions and Unit configurations are not guaranteed and may change during construction. Depictions of furnishings, fixtures, and other items of personal property are not included with purchase. Uses of space depicted are not guaranteed. Consult the Developer's prospectus to learn Unit dimensions, what is offered with the Unit, and all terms and conditions. 2022 © Carlton Terrace Owner LLC, with all rights reserved.

RESIDENCE

FLOORS

C

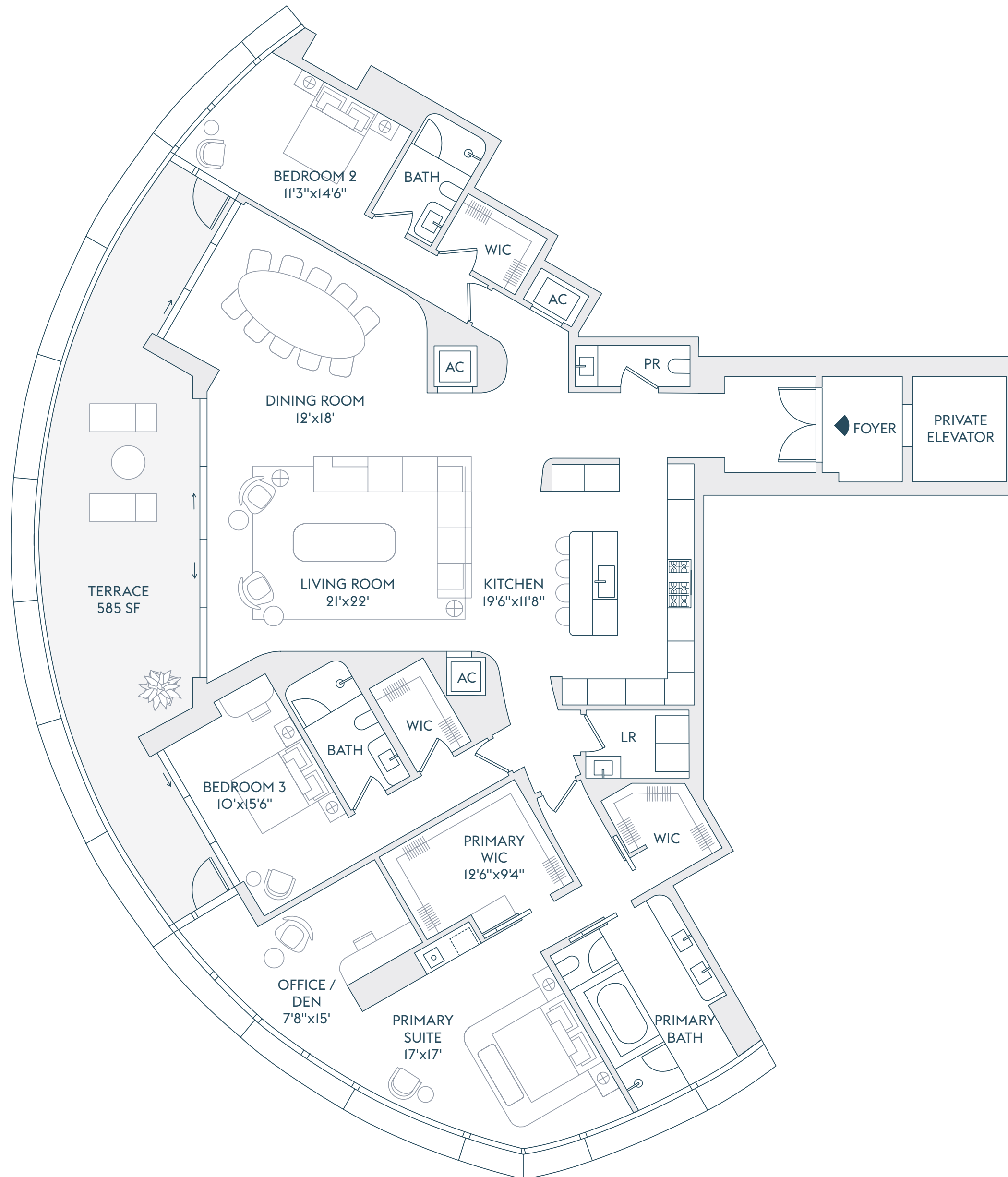
3-21

3 BEDROOMS
3 BATHROOMS
1 POWDER ROOM
OFFICE / DEN

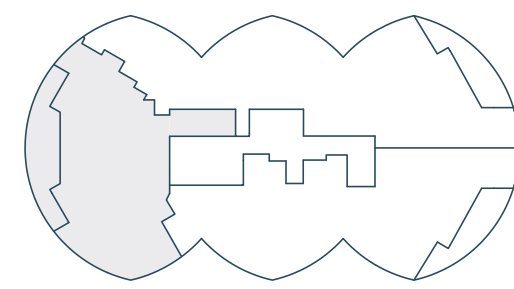
INTERIOR
3,297 SF | 306.5 SQM

EXTERIOR
585 SF | 54 SQM

TOTAL
3,882 SF | 360.5 SQM



INTRACOASTAL
WATERS



ATLANTIC OCEAN

The dimensions stated for this Unit floor plan are approximate because there are various recognized methods for calculating the square footage of a Unit. The square footage stated herein is calculated from the exterior boundaries of the exterior walls to the centerline of interior demising walls without deductions for cutouts, curves, or architectural features. This method typically results in quoted dimensions greater than the dimensions that would be determined by using other accepted methods. The definition of "Unit" and the calculation method to be relied upon is the method of calculation set forth by the Developer in the Developer's prospectus, which method may result in a square footage calculation that is less than the method used herein. Dimensions and Unit configurations are not guaranteed and may change during construction. Depictions of furnishings, fixtures, and other items of personal property are not included with purchase. Uses of space depicted are not guaranteed. Consult the Developer's prospectus to learn Unit dimensions, what is offered with the Unit, and all terms and conditions. 2022 © Carlton Terrace Owner LLC, with all rights reserved.